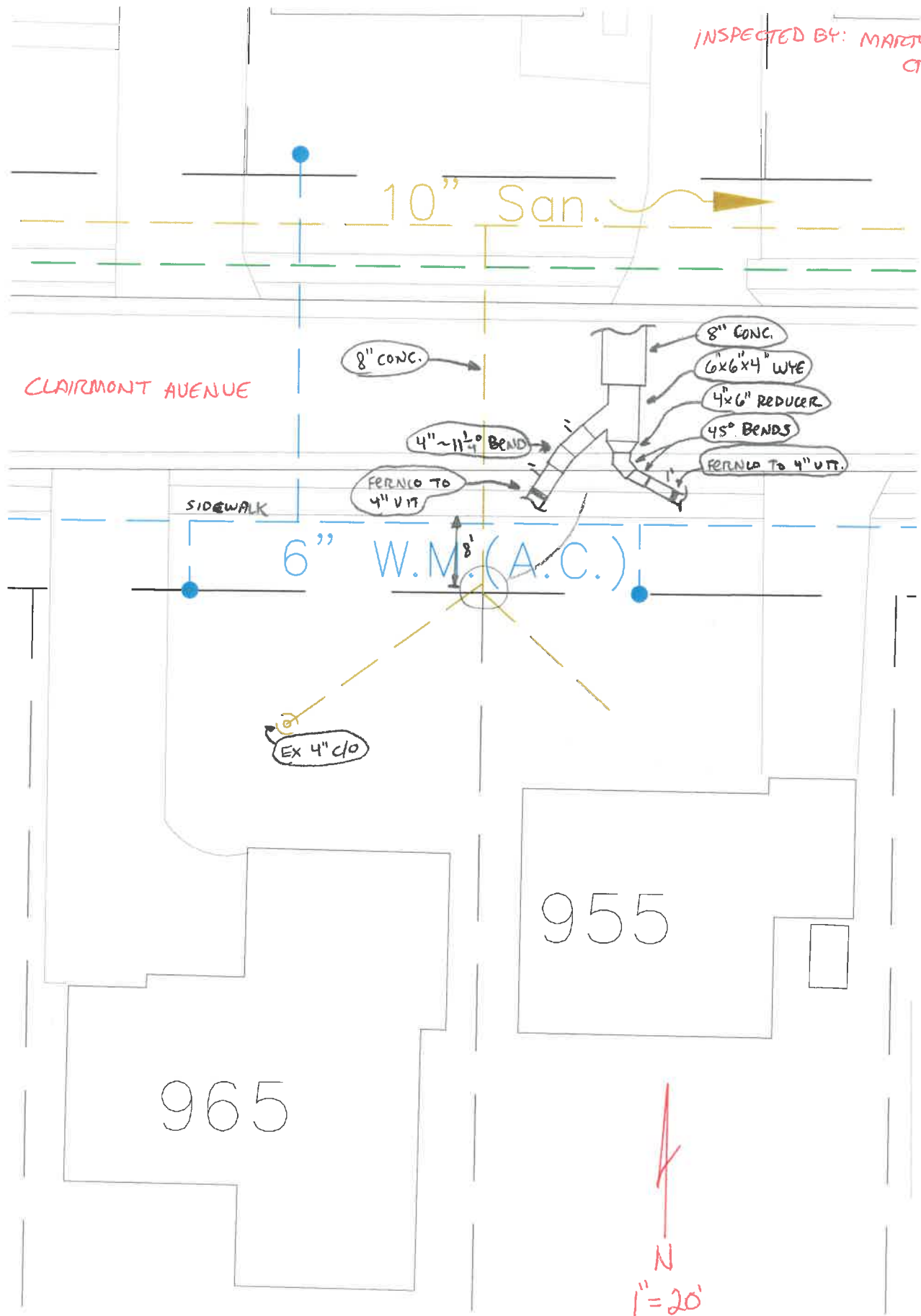


955 + 965 CLAIRMONT AVENUE

DATE: 10-16-13

INSTALLED BY: JA HILLIS/MOORE
PLUMBING

INSPECTED BY: MARELY
CROSSLAND



CLAIRMONT AVENUE

SIDEWALK

8" CONC.

8" CONC.

6x6x4 WYE

4x6" REDUCER

45° BENDS

FEED TO 4" VIT.

4" ~ 11 1/4° BEND

FEED TO 4" VIT

Ex 4" clo

6" W.M. (A.C.)

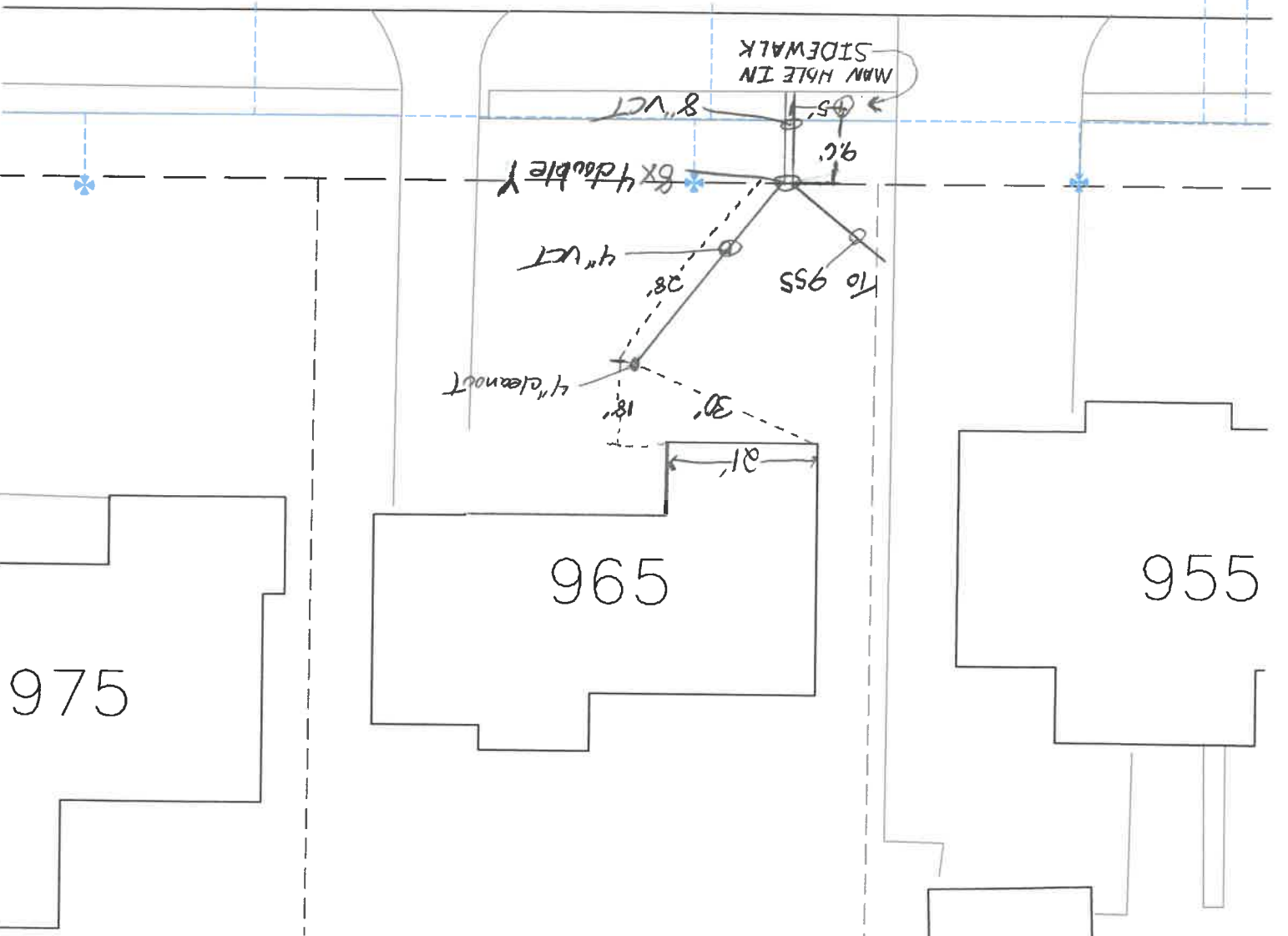
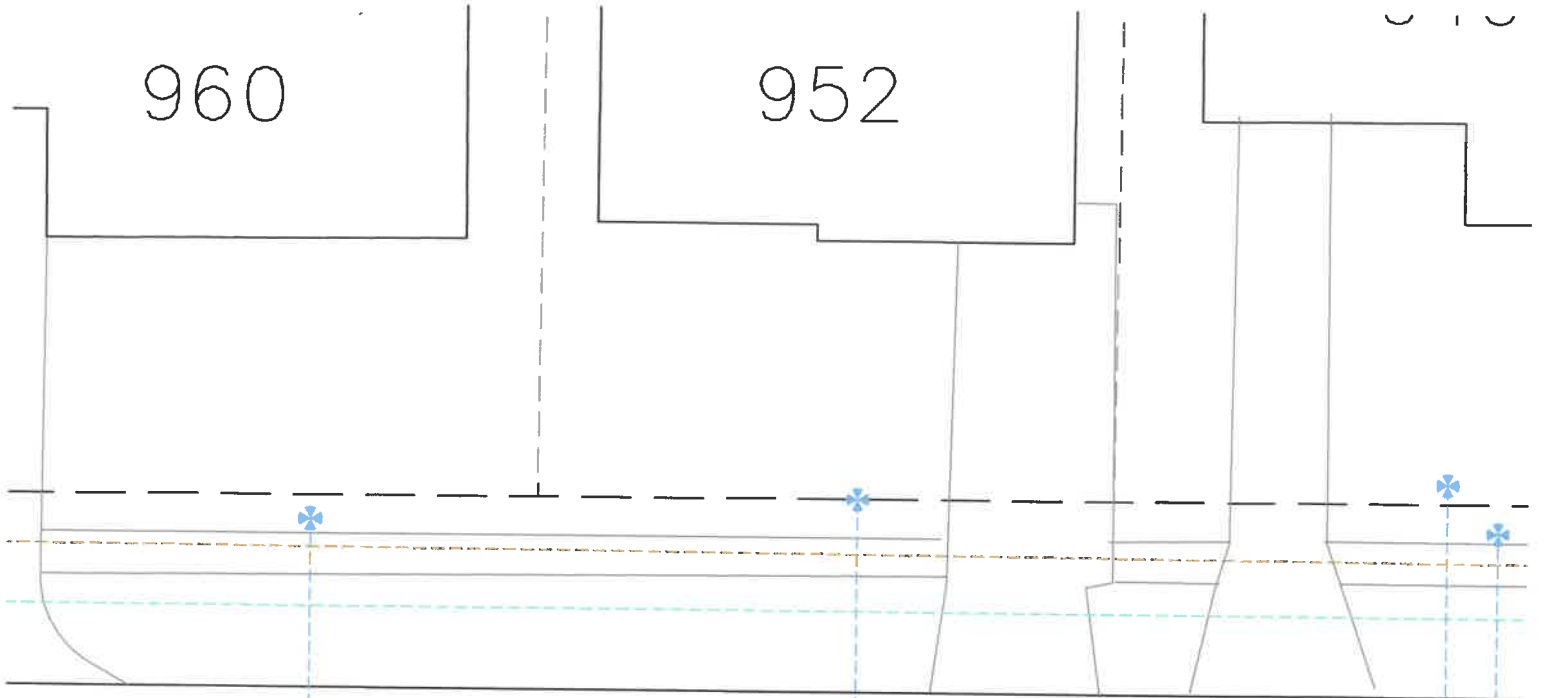
955

965

N
1" = 20'

960

952



965 CLAIRMONT